

**President**  
Thierry Frennet  
Rue La rue, 17  
1420 Braine L'Alleud  
Belgium

**E-mail :**  
[thierry.frennet@fthsprl.be](mailto:thierry.frennet@fthsprl.be)



**Honorary Secretary**  
Dr. Charles Lloyd  
18 Linefield Road,  
Carnoustie  
Angus, DD7 6DP, Scotland

**E-mail :**  
[charles.lloyd@blueyonder.co.uk](mailto:charles.lloyd@blueyonder.co.uk)

**BULLETIN 198**

**NOVEMBER 2024**

**Bulletin Editor**

Charles Hénuzet      Place St-Roch 30      5620 Florennes      BELGIUM  
E-mail : [henuzetcharles@hotmail.com](mailto:henuzetcharles@hotmail.com)

---

<b>CONTENTS</b>	<b>Page(s)</b>
<b>VERY IMPORTANTE NOTICE bank account</b>	2
<b>Annual subscription 2025</b>	3
<b>The black surcharge to 2,50 on 10 francs red of Ruanda-Urundi</b>	
W.Deijnckens	4
<b>The LZ129 Zeppelin</b>	
Ch Hénuzet and J.P. Flamand	10
<b>Result of sale 2024/1</b>	12
<b>Sale 2024/2</b>	23

**The Study Circle website**  
**[www.belgian-congo-study-circle.be](http://www.belgian-congo-study-circle.be)**

From the editor



## **VERY IMPORTANT NOTICE**

### **OUR (EU) BANK ACCOUNT HAS BEEN CHANGED**

We have a new bank account. It is with the CBC bank. (It replaces the BNP Paribas account which has been closed).

Please would ALL members who are residents in the European Union use:

**IBAN => BE15 7320 7837 3930**  
**BIC => CREGBEBB**

Please would ALL members who are not residents in the European Union pay into our International Account (which is held in the UK)

**IBAN => GB30 TSBS 8768 2378 3757 60**  
**BIC => TSBSGB21013**

### **ALTERNATIVELY**

**ALL members, regardless of their place of residence, can make payments by our PAYPAL account.**

## Notice: Annual Subscription (US term Dues) – 2025

Subscription rates remain unchanged for the year 2025, these being:

Region	Subscription
Belgium	18€ (18€ for those who receive the Bulletin, etc. by e-mail)
Other European counties	24€ (18€ for those who receive the Bulletin, etc. by e-mail)
UK	£20 (£15 for those who receive the Bulletin, etc. by e-mail)
USA	\$29 (\$20 for those who receive the Bulletin, etc. by e-mail)
Rest of the World	30€ (18€ for those who receive the Bulletin, etc. by e-mail)

**Payment is due on 1<sup>st</sup> January 2025. Individual notifications are not sent. Please take this notice as the invitation to renew your BCSC membership for 2025.**

### **How to pay**

#### ***Members who are residents of the EU:***

1. by direct payment into the Study Circle's bank account with the "CBC BANK":  
IBAN BE15 7320 7837 3930
- or 2. by PayPal to [belgiancongostudycircle@hotmail.com](mailto:belgiancongostudycircle@hotmail.com).

The Study Circle PayPal account is held in Belgium but will accept payments either in Euros, or US Dollars or Pounds Sterling. You are responsible for paying PayPal charges. (These are small. Ensure you state you are making a gift to a friend, for which charges are less.)

#### ***Members living in other countries:***

- 1 by electronic bank transfer to our account with the 'TSB Bank Ltd.' in the UK  
Bank Sort Code: 87-68-23  
Account Name: "Belgian Congo Study Account"  
Account No: 78375760  
IBAN GB30 TSBS 8768 2378 3757 60  
BIC TSBSGB21013
- or 2. by PayPal to [belgiancongostudycircle@hotmail.com](mailto:belgiancongostudycircle@hotmail.com).

#### ***UK members only***

An additional way is open to you: Payment by a cheque drawn on a UK bank, payable to "Belgian Congo Study Account" and sent by post to the BCSC Secretary, Charles Lloyd at 18 Linefield Road, Carnoustie, Angus DD7 6DP, Scotland. (He will deposit it in the TSB account.)

### **NOTES:**

Whatever payment method used you are responsible for all charges applied so that the BCSC receives full payment due.

If anyone has a problem paying by any of the methods now applicable to him/her, please contact the Treasurer, Ludo Achten ([ludoachten@hotmail.com](mailto:ludoachten@hotmail.com)).

A reminder will be sent in March to any member who has not paid, and if necessary a second reminder will be sent in June.

## The black surcharge to 2,50 on 10 francs red of RUANDA-URUNDI.

### Walter Deijnckens

Production of the Belgian Congo stamp series with the subject of the Leopoldville statue of King Albert was awarded to the printing company Litho. Co. Ltd. of Cape Town, South Africa. The series contains 11 stamps, the highest value of which is 10 francs, in red.

Designed by Mr. M.J. Goodman of Cape Town, the zinc printing plates were supplied by the company, Mc Manus Bros of Cape Town. The stamps were printed by offset litho.

This stamp was overprinted in Leopoldville with the words Ruanda Urundi, the number 2.50 and a bar to cover the original value, 10.00 Fr. The stamp was issued on 27-4-1941 according to order N° 135 PT. and consequently should be listed in the Belgian Official Catalogue (COB).as N° 125 instead of N° 120. It was removed from use after 4 months, on 1-8-1942. Printing: 50,000 copies.

According to Mr. Tony Sanchez-Ariño (Belgian Congo Study Circle N° 197), only 2 sheets of 100 were printed with grossly misplaced overprints. (a different variety on each).



Here are some stamps with shifted overprints that have ended up in my collection over the years.

The surcharge below show imperfections in several places. Stamp 77 shows a dash above the R of Rwanda. Stamp 88 has insufficient ink at the bottom of the 2 U's of Urundi.







Look at imperfect overprints of stamps 2, 3 and 5 on the top two rows. The position of the words Ruanda and Urundi are shifted in relation to others.





The perforation of the stamps also shows an incorrect positioning.



Domestic mail sent from Usumbura 30-10-42 to Albertville -6-11-42.

The stamp was already out of service on 1-9-42, hence the O for obsolete and T for tax.

Port: 2.50 fr./10 grams from 1-12-1940.

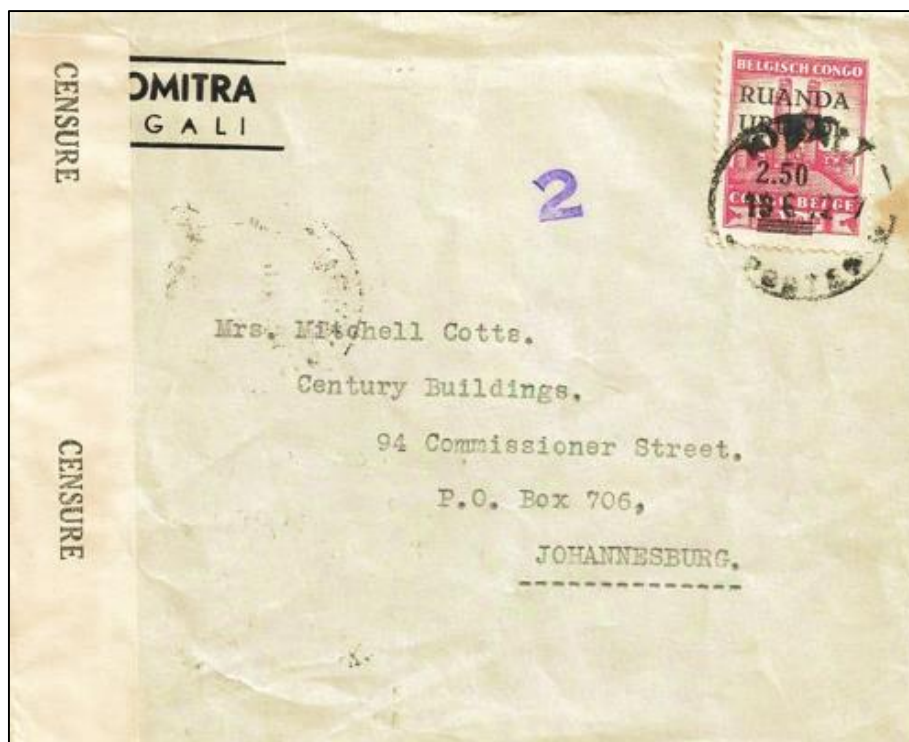


Usumbura 14-7-42 to Gumba-Mobeka (sub-perception of Coquilhatville).  
Port: 2.50 fr./10 grams.



Kigali "Postes" 18 6 42 to Johannesburg South Africa with censorship mark of censor 2 (Usumbura), 19-6-42 & censor's resealing label "Censure Congo Belge". Transiting Elisabethville on -3-7-42. Port: 2.50 fr./20 g., according to the African Post Union.

Cancellation on the reverse side





Usumbura 10-8-42 where it was inspected and the mark of censor 2 (manuscript on the left lower corner) was applied. It was resealed using a "Censure Congo Belge" label. Airmail from Usumbura via Leopoldville 12-8 42 to Lagos, then Trinidad (where it was inspected and resealed with a British censorship label I.E./8087) and finally sent to New York.



Port: 3.50 fr./20 g. letter + 15.50 fr./5 g. Air tax = 19 fr. total.





In the last Bulletin, 197, our member Tony Sanchez-Ariño presented an article “Two elusive errors from Ruanda-Urundi”. At the end of his article, he asked if other members had any information about this surcharge.

Our member, Thierry Frennet has sent two pieces.

The first:

The overprint is moved horizontally to the right. (i.e. a similar error as that shown by Tony )



The second :

The overprint is rotated anti-clockwise by about 3 degrees and displaced diagonally in a top right to bottom left direction (as seen on this page).



# The LZ129 HINDENBURG zeppelin<sup>1</sup>

## Ch. Henuzet & JP Flamand

Introduction: The article presented here concerns Congolese mail that has been transported on the zeppelin LZ129 "HINDENBURG"; 90% of these letters are purely philatelic mail, but the cancellations and special cachets used deserve to be studied.

History: The airship LZ129 "HINDENBURG" made its first demonstration flight over Lake Constance on March 4<sup>th</sup> 1936. The more than 70 passengers on board enjoyed the luxury and comfort of its dining room, lounge and library.

The LZ129 would serve on two international routes: the line to South America called "SUDAMERIKA" and the line to North America called "NORDAMERIKA".

The first flight on the Sudamerika line was made on March 31<sup>st</sup> 1936. Departing at 5:32 am from Friedrichshafen, LZ129 arrived at Rio de Janeiro (Brazil) on April 4<sup>th</sup> 1936 at 9:12 am.

The first flight on the Nordamerika line took place on May 6<sup>th</sup>, 1936, departing from Friedrichshafen to arrive at New York at 6:10 am on May 9<sup>th</sup>. It was on this flight that the mail presented below was transported.

LZ129 met a tragic end because its buoyancy bags were inflated with highly flammable hydrogen. A year later, on May 7<sup>th</sup> 1937, when it was being moored to the pylon at Lakehurst airfield (in the United States) a spark of static electricity ignited the gas and LZ129 was destroyed entirely by fire

Its existence was very short, 14 months almost to the day. It had made 57 flights without any problem but the 58<sup>th</sup> was fatal. Despite this accident, one last zeppelin was still built, the LZ130. It was the war in 1939 that put an end to zeppelin flights.



---

<sup>1</sup> First published in *Les Cahiers du Congo*. It has been translated and reprinted here with the permission of its editor. We thank him



**Technical characteristics:** Volume: 200,000 m<sup>3</sup> Length: 245 m Diameter: 41.2 m  
Speed: 130 km/h Weight: 60 tons.

It was equipped with 4 engines with a variable power output ranging from 8 to 900 horsepower which could be increased to 1200 horsepower at full power. It was the largest zeppelin ever built.

### Duration of the trip:

- The Nordamerika line: Europe – North America (Friedrichshafen – Lakehurst) took 3 days for the outward and return journeys. The distance covered was ± 7,000 km.
- The Sudamerika line: Europe-South America (Friedrichshafen – Rio de Janeiro) took 5 days for the outward and return journeys. The distance covered was ± 11,000 km.

## Study of stamps and cancellations

Back side



A card sent from Leopoldville on April 23<sup>rd</sup> 1936 to Akron in the USA to be transported by Zeppelin. The card has been franked using the Congolese stamps: 40 c (172) and 3.50 F (PA17) as well as the German Zeppelin 50 pf stamp. (Michel Cat., No. 606). The Congolese stamps have been cancelled by a Leopoldville 1 postmark on 23.4.36-8 of the type 7A10 (Heim-Keach) which was in use from 1933 to 1937.

The card was carried by an AIR AFRIQUE aircraft on the 30th regular Congo/France air service, departing from Elisabethville on Saturday, April 25<sup>th</sup> 1936 and arriving at Paris on May 1<sup>st</sup>. From there it was taken by train to Brussels where it received a transit mark on May 2<sup>nd</sup> 1936. From Brussels (Evere) it was carried on board a DEUTSCHE LUFTHANSA plane to Frankfurt from where its journey continued by land to Friedrichshafen. At Friedrichshafen the 50 pf stamp was cancelled, on May 5<sup>th</sup> 1936, and finally the card received the red cachet with the letter "e".

With passengers and mail loaded aboard Zeppelin LZ129 "HINDENBURG", the



airship left Germany on May 6<sup>th</sup>.1936 at 8:30 pm. and crossed the North Atlantic to arrive at Lakehurst (USA) on May 9<sup>th</sup> at 6:10 am. At the flight destination, the card received the arrival mark of NEW YORK N.Y.18 on May 9<sup>th</sup> at 9 am. This was the zeppelin's first voyage over the North Atlantic.

Tariff: 30 centimes (10 centimes overpaid) + 3.50 F/5 g air surcharge + 50 pf (blue) stamp, printed specially for this 1<sup>st</sup> flight for the USA.

## FRONT

### i) Payment of postage of mail by a German stamp:

This is the flight surcharge. The air surcharge for a zeppelin flight was paid by means of one of the 2 stamps issued specially for this purpose. They are the 50 pfennig and 75 pfennig stamps (Y&T catalog PA55 and 56).

For the air surcharge, the 50 pf stamp was required for the Nordamerika line and 75 pf for the Sudamerika line. They had to be used only on the outward journey.

These two stamps indicated to the postal employee that the mail was intended for carriage by zeppelin, even if no specific mention of the that appeared on the cover.



For mail from abroad:

Specific stamps were not mandatory as long as the postage was correct as shown in the cover below, from Belgium but with the mention printed in French, which allowed the correct sorting:

### “BY ZEPPELIN L.Z.129 TO NEW YORK”



**Tariff:** 1.75 F (letter for abroad) +  
1.75 F (registration) + 8.50 F/5 g (air surcharge) =  
12.00 F (10 centimes overpaid).

J P Flamand Collection

## ii) The special red cachet

This cachet had a double circle in red with an inscription between these two circles, namely “\* **DEUTSCHE LUFTPOST e EUROPA– NORDAMERIKA**” In the centre there is the nose of a zeppelin and a seaplane coming out of the clouds and flying above the water. Initially, this cachet was used for catapulted mail flights to South America (for the first time on February 3<sup>rd</sup> 1934) but subsequently also for zeppelin flights. It was used for the first time on mail carried on the flight of LZ 127 Graf Zeppelin on May 26<sup>th</sup> 1934 to South America and the cachet carried the inscription: “\* **DEUTSCHE LUFTPOST e EUROPA – SUDAMERIKA**”.

### The letter of the alphabet that is between LUFTPOST and AMERIKA

In this example, we can see a letter "e" sited on the right-hand-side of the red cachet.



For the 1st flight to North America 7 hand-stamps were used, each with a different letter:

- “a” and “b” at the BERLIN C2 post office
- “c” and “d” at the FRANKFURT post office
- “e” at the LORCH (Württemberg) post office  
(where it remained until May 5<sup>th</sup> 1936)
- “e” at the FRIEDRICHSHAFEN post office after  
May 6<sup>th</sup> 1936 (the date of the first  
Nordamerika flight)
- “f” and “g” at the STUTTGART 9 post office

This red cachet was applied at the post office at which the German stamp was cancelled. It was also applied on incoming mail from abroad and it is thanks to this cachet that we can determine the place of cancellation in Germany.

## BACK

### iii) The 3 stars BRUSSELS transit cancellation



This postmark was applied at the COLLECTORS' COUNTER in CENTRAL BRUSSELS.

Any collector wishing to make a philatelic cover went there or sent his mail (a well-established service made this possible) and thus obtained the necessary special cachet(s). Then the cover was stamped with the philatelic cancellation (postmark) and the envelope sent.

To date, documents have been found cancelled by this postmark from the February 10<sup>th</sup> 1931 to the August 23<sup>rd</sup> 1937. From 1938, it was replaced by a similar postmark, still BRUSSELS 1 but with the stars were removed.

This postmark was not reserved for the exclusive use of philatelic covers; it was used on other shipments as shown by the cover below.

Registered letter cancelled at BRUSSELS 1 \*\*\* on 15 VI 31.



The central Brussels office was not the only one to have such a hand-stamp. There was also one in the Belgian Congo in Leopoldville and another in Ruanda-Urundi in Usumbura. (Not listed in Heim-Keach).

Flight by LZ 127 (Graf Zeppelin) on October 27<sup>th</sup> 1934 – 11<sup>th</sup> Sudamerikafahrt



Coll. F. Van Der Haegen



This letter was franked by means of PA n° 7, 8, and 9, which were cancelled using the LEOPOLDVILLE\*\*\* hand-stamp on 7 IX 1934. It was transported by the ship "Anversville 2", departing from Boma on October 5<sup>th</sup> to arrive at Antwerp around October 23<sup>rd</sup> 1934. The two British 5d stamps, required as a postage supplement, were cancelled at Norwich on October 24<sup>th</sup> 1934.

FRIEDRICHSHAFEN departure postmark 27.10.34.-8 p.m. + special red cachet C.



## Flight by LZ 127 (Graf Zeppelin) on 27 October 1934 – 11th Sudamerikafahrt



Coll. F. Van Der Haegen

This letter was cancelled USUMBURA\*\*\* on 25 VIII 1934. It too was transported by the ship "Anversville 2", departing from Boma on October 5<sup>th</sup> with arrival in Antwerp on October 23<sup>rd</sup> 1934. The two British 5d. stamps were required for an additional postage charge and cancelled at Norwich on October 24<sup>th</sup>, 1934. The departure postmark from FRIEDRICHSHAFEN is dated 27.10.34.- 8 p.m. There is a special red cachet C.

Both envelopes were sent franked at the printed matter rate.

As we have not had access to the back of these 2 letters, we cannot confirm their arrival in South America. Moreover, why was the passage through Norwich, what is the reason for the mixed franking and why are the rates different on the two covers?

### iv) The arrival postmark at New York

#### THREE TYPES

You can find 3 any one of three different arrival postmarks for ordinary covers.

TYPE 1



TYPE 2



TYPE 3



Type 1: NEW YORK. N. Y. 18: Generally used for mail which remains in the district of New York or which makes the return journey by the Zeppelin.

Type 2: NEW YORK. .N. Y. 32: Used for mail leaving the New York District.

Type 3: Is an oval postmark with a double circle and used for REGISTERED mail.

Note: Information on American cancellation dates on postmarks: In the US numbering system a date such as "5 – 9" should be read as "MAY 9<sup>th</sup>". (The ordering differs from that used in other English speaking countries)

**We have identified and can list 4 flights of the LZ 129 that carried mail from the Congo:**

1<sup>st</sup> Nordamerikafahrt: flight "Outbound" May 6-9

3<sup>rd</sup> Südamerikafahrt: flight "Outbound" July 20-24

9<sup>th</sup> Nordamerikafahrt: flight "Outbound" September 26-29

10<sup>th</sup> Nordamerikafahrt: flight "Outbound" October 5-7

**Flight by LZ 129 on 20 July 1936 – 3rd Sudamerikafahrt**



Registered letter cancelled at LÉOPOLDVILLE KALINA on 10-7-1936.-3 pm.

Transported on the 37<sup>th</sup> SABENA regular air link to Brussels (double circle oval mark dated 17-7-1936).

Then, by plane to Berlin [Berlin C2 arrival postmark (dated 20-7-1936)] and then to Frankfurt where the special red cachet was applied. Finally, it received the Rio de Janeiro arrival mark on 27-7-1936.

Tariff :

1.50 F (letter to Belgium)  
+2.50 F (registration)  
+ 3.50 F/5 g (air surcharge for Belgium)  
+ 17 F/5 g (air surcharge for South America)  
= 24.50 F.

Coll. F Van der Haegen

The letter is franked at 25.00 F with 3 airmail stamps from the Belgian Congo at: 15 F (PA13) + 2 x 5 F (PA12)

In the upper right, the sender has specified the desired means of air transport: **“By plane Sabena Léo-Bruxelles and only by German airmail Frankfurt/M-South America”**.

### 1936 was the Year of the Berlin Olympic Games

In red in a frame, commemorative cachet **“OLYMPIAFAHRT”**.

### Flight by LZ 129 (Hindenburg) on 26 September 1936 – 9<sup>th</sup> Nordamerikafahrt



A registered letter cancelled at Thysville on 19-9-36.-10 a.m. Departure postmark from FRANKFURT airport (MAIN) on 26.9.36.-6 p.m. (bridge stamp in black ink) + special lilac red cachet (Hindenburg flying over the skyscrapers of New York).

Coll. F Van der Haegen

### Flight by LZ 129 (Hindenburg) on 5 October 1936 –10<sup>th</sup> Nordamerikafahrt



Coll. F Van der Haegen

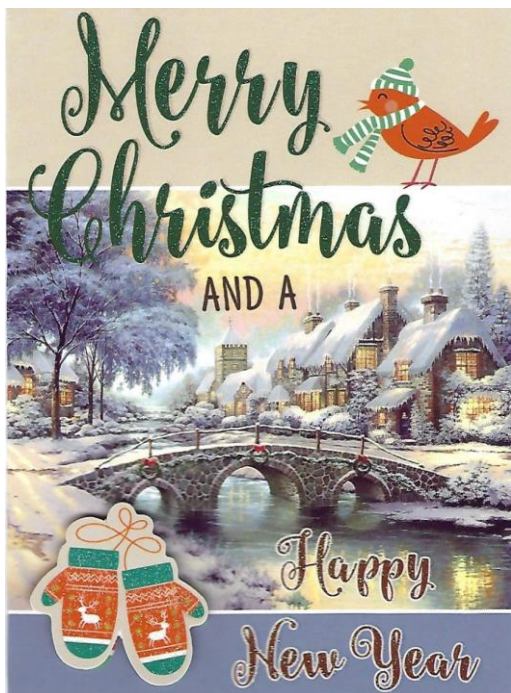


A registered letter cancelled at Thysville on 26-9-36. Departure postmark from FRANK-FURT AIRPORT (MAIN) on 5.10.36.-6 pm. (The bridge postmark in black ink) + special lilac red cachet (The Hindenburg flying over a valley and a fortified castle).

**Tariff :**            1.50 F (letter for Belgium)  
                      + 2.50 F (registration)  
                      + 3.50 F/5 g (air surcharge to Belgium)  
                      + 8.50F/5 g (North American air surcharge)  
                      = 16.00 F.

The letter is franked at 17.00 F with an airmail stamp from the Belgian Congo at: 15 F (PA5) + one ordinary stamp 2 F / 1.75 F(161) = 1 F overpaid.

As we have not had access to the back of these 2 letters, we cannot confirm their passage through Brussels and their arrival in North America.



The officers wish you  
a Merry Christmas  
a Happy new year  
a good health  
&  
many discoveries

**POSTAL AUCTION SALE 2024-1  
REALISED PRICES**

LOT	PRICE	LOT	PRICE	LOT	PRICE	LOT	PRICE
1	4,55	36		71	25,00	106	
2	2,30	37		72	8,25	107	
3	4,55	38		73	36,00	108	
4	2,05	39		74	10,00	109	19,75
5	1,25	40		75	67,00	110	11,00
6	4,50	41		76	42,00	111	
7	1,50	42	9,25	77	19,00	112	
8	5,25	43	5,25	78	19,00	113	
9	5,75	44	3,00	79	9,00	114	5,50
10	5,00	45	5,25	80	12,50	115	1,00
11	2,00	46	5,00	81	5,50	116	4,50
12	3,25	47		82	64,00	117	
13	6,50	48	1,00	83	64,00	118	
14		49	12,50	84	44,00	119	6,25
15		50	4,25	85		120	
16		51	3,75	86	24,00	121	16,25
17	12,25	52	15,75	87	16,25	122	12,25
18		53	2,75	88	36,00	133	
19		54	6,25	89		124	5,25
20		55	38,00	90	34,00	125	4,55
21	30,00	56		91	3,50	126	
22	6,25	57		92		127	9,00
23		58	3,00	93	4,00	128	
24		59	2,50	94		129	1,50
25		60	2,55	95		130	1,50
26		61		96		131	
27		62	10,25	97		132	
28		63	6,50	98		133	
29		64	152,00	99			
30		65	232,00	100	14,50		
31		66		101			
32		67		102			
33		68		103			
34		69	35,00	104			
35	4,00	70	96,00	105			

## Bidding form - BCSC 2024-2

To be sent to

Th.FRENNET – Rue la rue 17 – B-1420 Braine-l'Alleud – Belgique/Europe

Or by E-mail at : [Thierry.frennet@fthsprl.be](mailto:Thierry.frennet@fthsprl.be)

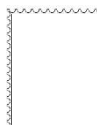
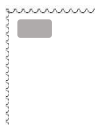


**CLOSING DATE FOR BIDS – 15<sup>th</sup> December 2024**

Name : ..... Date : .....

Full Address: ..... Signature : .....

### Auction Rules

#### Abbreviations used

<b>U.M.</b>	= unmounted mint – unused with original gum in Post Office state, never hinged.	<b>GUM</b>	
<b>L.M.</b>	= lightly hinged - unused with original gum, mounted with a peelable hinge.		
<b>O.G.</b>	= original gum - unused with gum slightly disturbed or alternatively having a previous hinge	<b>U.M</b>	<b>L.M.</b>
<b>Part O.G.</b>	= part original gum – unused with original gum. Large hinge remnants may or may not be present.		
		<b>O.G.</b>	<b>Part O.G.</b>

CB – Congo Belge; COB – Catalogue Officiel Belge number; RU – Ruanda-Urundi;  
Designation of cancellations are in accordance with the Heim & Keach classification

#### Bidding steps

0	to	5 €	per	0.05 €
5€	to	25 €	per	0.25 €
25€	to	50 €	per	1.00 €
50€	to	250 €	per	2.00 €
250€	to	500 €	per	5.00 €
	over	500 €	per	10.00 €

**Postage on lots will be charged to buyers**

See also our website: [www.Belgian-congo-study-circle.be](http://www.Belgian-congo-study-circle.be)

Lot No.	Limit (Euros)	Lot No.	Limit (Euros)	Lot No.	Limit (Euros)





Lot	SALE 2024/2 Description	COB #	Min. Bid €
<b>Belgian Congo stamps and covers</b>			
1	1894 issue 5F carmine (3), used. <i>One thinned stamp, another w/1 short perf</i>	28	14,00
2	1894 issue 5F carmine, BOMA 1897 cancellation	28	12,00
3	1894 issue 5F carmine, MATADI 1908 cancellation	28	12,00
4	1894 issue 10F green perf 14¼, MATADI cancellation 190?	29	14,00
5	1894 issue 10F green perf 14¼, BANANA cancellation ??-??-1900	29	13,50
6	1894 issue 5c red-brown + 10c red-brown (perf 15), no gum	15 + 17	2,00
7	1886 issue 25c blue LH	3	18,00
8	1887 issue 5c blue-green, 10c rose + 10 c deep-rose (# 7a), 25c blue, 50c grey, used	6/8 + 7a + 10	1,75
9	1887 issue 50c red-brown (2), BO(MA) & BANANA cancellations	9	19,00
10	1887 issue, 5F grey, used	12	35,00
11	1894 issue 5c green (2), 10c carmine (1), 15c ochre (1), 25c orange (1), 40c blue-green (1), 50c green (2), 50c olive (1), 1F violet (1), LH or OG	between 16 & 26A	8,75
12	1930 issue, full set LH	150-58	17,50
13	1939 issue, LH	209-13	9,00
14	1894 issue 25c orange, 50c green, 1F violet, LH	21, 24, 26A	10,00
15	1928 Stanley issue, full set LH	135/49	12,50
16	1930 airmail stamps issue, UM	PA5/6	5,00
17	1909 Congo Belge typo overprint issue, 10c carmine, 15c ochre, 25c blue LH	41/3	5,00
18	1909 Congo Belge typo overprint issue, 5c green used, 40c blue-green no gum, 50c olive used, 1F carmine used ( <i>this one with a few short perfs.</i> )	40-44/6	3,00
19	1909 local overprint issue 5c green used, 10c carmine LH, 50c olive LH	30L, 31L, 35L	2,50
20	<b>Miniature sheets UPU, full set LH</b> (hinges on the margin: the stamps are UM) <b>Congo + Ruanda-Urundi</b> (12 miniature sheets) COB value : over 2500 euros. RARE	BL3A/10A + BLU1A/4A	770,00
21	Cover from Leopoldville 30 janv 1894 to Brussels with 1887 issue 50c dark brown, forwarded to Gent. Nice transit marks on reverse	9a	100,00
22	Censored airmail cover from BONDONDO june 1945 to Hastings, Nebraska, USA censor		10,00

	mark Leopoldville 6.6.45		
23	Censored airmail cover from ELISABETHVILLE 18.1.42 to N.Y., USA. Belgian Congo & American censor labels. Nice franking (COB 180 x 6, 182 x 2, 221)	180, 182, 221	10,00
24	Censored airmail cover from MATADI 25.2.43 to Stockholm, Sweden. Belgian Congo, south-African & German censor labels. Transit mark from Portugal		25,00
25	Censored airmail cover from COSTERMANSVILLE 03.10.40 to Dar Es Salaam. Arrival mark 10.10.40 on reverse. British censor mark		20,00
26	Censored airmail cover from NIZI 30.05.44 to Johannesburg, South-Africa. Forwarded to Durban, then back to Congo. Nice transit marks on reverse. South-African censor label.		10,00
27	Censored cover from E'ville 10.11.43 to Bath, Somerset, UK. Congo & South-African censor labels.		10,00
28	Censored cover from MATADI 10.05.43 to Ilorin, Nigeria. Congo & British censor labels. Arrival mark on reverse 5 june 43		20,00
29	<b>Ruanda-Urundi</b> registered censored cover with 1941 "Meulemans" issue, full set on cover, from Usumbura 31.5.41 to Dar Es Salaam. Violet British censor boxed mark.	114/7	40,00
30	<b>Ruanda-Urundi</b> airmail cover, first flight from Usumbura to Libenge (Usumbura-Stanleyville line), and back to Belgium (printed matter postal rate). Transit marks on reverse	98	10,00
31	<b>Belgian Congo 1923 issue Elisabethville overprint COB 104A (50), full sheet IV1-B1, UM (MNH) + Tavano certificate</b>	104A	500,00
32	1921 issue 10c/5c green, full sheet IV-D1, perf 14, UM	86	10,00
33	1894 issue 5c green, full sheet I1-B1, UM	16	100,00
34	1894 issue 50c olive, full sheet I1-B1, UM	25	150,00
35	1894 issue 25c blue, full sheet, UM	22	150,00
36	1894 issue 10c carmine, full sheet, UM	19	100,00
37	1934 airmail issue 1,50 F dark green, full sheets (4) plate # 1/2/3/4 (full series of the 4 panels) + 4,50F blue, full sheets (2) plate # 3/4, UM	PA9 + PA11	15,00
38	1934 airmail issue 4,50F blue, full sheets (2, each with 2 panels) plate # 1/2/3/4 (full series of the 4 panels), UM	PA11	40,00
39	Cover with 1887 issue 50c red-brown, from Boma 29.6.1894 to N.Y., USA. Transit mark of Lisbon and arrival mark of N.Y. on reverse. <i>Cover rather stained, stamp correct but off-centre.</i>	9	50,00
40	Registered cover with 1894 issue 5c green, 10c carmine (2), 25c blue, 50c olive from BANANA 2.8.1900 to Germany. <i>A few pale rust spots</i>	16(2), 19, 22, 25	75,00
41	Cover from DIMA 12 nove 1909 to Bruges (Belgium), with mixed correct (50c) franking on reverse : 15c L4 (of 1909 local overprints issue) + 5c (2), 10c, 15c of the unilingual 1909 issue. Rare	32L, 50(x2), 51,52	150,00
42	Cover from DIMA 24 fevr 1910 to Bruges (Belgium), with mixed correct (50c) franking on reverse : 40c L4 (of 1909 local overprints issue) + 5c (2) of the unilingual	34L, 50 (x2)	150,00



	1909 issue. Rare; one 5c is damaged.		
43	1910 issue 3F red, cancellation Boma	61	3,25
44	1947 issue, 100F red-rose & black, strip of 3, UM	295	6,00
45	1915 1F olive, block of four, used, BOMA cancellation	70	1,00
46	1916 issue miniature sheet 15c green (type B), in two parts	66B	2,00
47	1930 issue, full set, UM	150/8	37,00
48	1923 & 1925 Vloors issues, blocks of four : 10c green UM, 20c olive-green LH/UM, 25c red-brown LH/UM, 30c pink no gum, 45c violet UM, 60c carmine UM, 20c green no gum, 50c orange-red no gum, 1F50 blue no gum	107-109/11-118-123/24-130	2,00
49	1927 issue 1,75/1,50 F blue. Nice AVAKUBI cancellation 12 juil 1928	134	0,75
<b>Ruanda Urundi</b>			
50	1929 issue, full set used + 1931 issue full set used	79/80, 90/1	1,50
51	1924 Vloors issue, full set LH, 2 short perfs on 5F	50/61	7,50
52	1924 Vloors issue, full set used	50/61	6,00
53	1930 issue full set UM	81/9	40,00
54	1941 "Meulemans" issue, full set UM	114/7	30,00
55	1942 "Meulemans" issue, full set used	114/7	12,00
56	1925 issue full set UM + 1934 issue LH + 1936 issue, full set LH + 1925 Vloors issue 20c, 30c, 40c, 50c, 75c & 1F	77/8, 107/10, between 62 & 71	1,25
57	1931 issue full set LH + 1937 issue full set LH	92/106 + 111/3	3,00
58	1931 issue full set used + 1937 full set used + 10 duplicates + 1,25 used pair (Usumbura 20.04.41) + 40c green with PAQUEBOT linear mark	92/106 + 111/3	3,50
59	1916 issue type B 5c green (4), 10c carmine (2), 15c green, 25c blue, 40c carmine-brown, 50c lilac-brown, 1F olive, 5F orange (i.e. full set + ), LH or no gum	28/35	6,50
60	Postage due stamps 1919 issue 5c used, 10c used, 15c LH, 25c used. 5c & 25c : cancellation Kigoma	TX 1/4	3,00
61	1918 Red Cross issue nearly full set, used (50c is missing). NB : 15c : perf 15 (rare)	36/44	3,00
62	1948 issue full set UM + 1949 surcharged issue full set UM	154/72 + 173/5	28,00
63	1955 issue full set UM	196/9	6,50
64	1944 issue "Messages" miniature sheet 5F orange-red, without border, stamp UM but small trace of hinge on sheet border	BL4	25,00
65	1944 issue "Messages" miniature sheets full set of 4, stamps UM but hinges on sheet border	BL1/4	175,00

<b>Belgian Congo Stamps and Covers</b>			
66	1921 issue 25c/15c block of four, UM	88	4,00
67	1922 issue 5c/40c, 10c/5c, 15c/50c, 30c/10c, 50c/25c, all blocks of four, used	85/7 + 89/90	1,00
68	1894 issue 10c carmine, block of four UM (but "tropical gum"), perf 14	19	4,00
69	1910 issue 40c blue-green + 1F carmine, blocks of four, UM or LH	58+60	10,00
70	1910 issue 1F carmine, UM	60	2,75
71	1931 Stanley with surcharge issue, full set LH or UM + 1F25/1F pink-carmine & 2F/1,75F blue in both formats + 2F/1,60F used in strip of 3 large format	162/7	4,50
72	1931 issue miniature sheet of 8 stamps (from booklet) 75c carmine-red, UM (tropical gum)	175	1,75
73	Internal airmail cover from Stanleyville 12-3-38 to Leopoldville (1 stamp damaged)	161A +185 (x4)	14,00
74	1889 issue 3,50/5F grey, boxed "colis postaux" surcharge, missing perf on inferior left corner, LH	CP5	15,00
75	1889 issue 3,50/5F grey, boxed "colis postaux" surcharge, no gum	CP5	17,00
76	1889 issue, 3,50/5F grey, boxed "colis postaux" surcharge, Matadi cancellation type 1.1 DMTY, 29 JUL 1896, one short perf on inferior left corner, slightly thinned	CP5	14,00
77	1887 issue 5F grey (2) LH, each stamp with one missing perf at upper right or left corner + fake (?) or proof (?) imperforated stamp, on thin gummed paper. Bargain !	12	15,00
78	1909 issue, local overprint L3, 1F carmine, used, slightly thinned + 10F green, perf 12, used, 2 short perfs (both L3) COB > 125 € Bargain!	36L3 + 39L3	9,00
79	1953 Flowers issue, full set LH	302/23	5,00
80	1953 Flowers issue, 1,25 F in pair UM	311	0,75
81	1909 issue, local overprint L1, 10F green, perf 12, used.	39 L1	15,00
82	1910 issue 5c green (x 50) : two half-sheets (superior part of the sheet, each with sheet number on upper right corner), no gum + three blocks of 10 + one block of 15, all with sheet margins, no gum. Bargain !	54	0,75
<b>Congo Republic, Katanga, South Kasai, Burundu</b>			
83	1963 Red Cross issue, miniature sheet, imperforate, UM	LX499	4,50
84	1963 and 1965 issues, full sets, in blocks of four, used	507/13 + 545/50	1,75
85	30.06.1962 issue Dag Hammarskjöld miniature sheet, LH	BL12	1,00
86	28.01.1963 issue luxe miniature sheet 20F brown UM	LX476	2,50
87	28.09.1967 issue miniature sheet Montreal exhibition UM	BL22	0,75
88	28.12.1966 issue John F. Kennedy miniature sheets (Error: perforated instead of	BL19/20	17,00

	imperforate) Rare		
89	Zaire, 1980 issue, Belgian Kings, full set, UM	1066/70	2,00
90	Burundi 07/1970 issue, African Animals and Nile River, full set of 4 miniature sheets, UM, perforated and imperforate. Pristine condition. COB 200 €	BL39B,C,D & E	20,00
91	Burundi 1975 issue African Animals, # COB 672/95 + PA 368/91, full sets in sheets (8 series), used, COB value 80 €	672/95 + PA 368/91	8,00
92	Katanga 1960 issue COB 4/5, full set UM	COB 4/5	3,00
93	South-Kasaï 1961 issue COB 1/13 full set UM	COB 1/13	13,00
94	South-Kasaï 1961 issue COB 18/19 full set UM	18/19	30,00
95	South-Kasaï 20.06.1961 issue full set UM COB 20A/24A , with overprint "pour les orphelins + 5F". Rare	20A/24A	33,00
96	South-Kasaï 1961 issue AD Kalonji, full set + miniature sheet (imperforate) + stamp of the miniature sheet (imperforate), all UM	25/8 + BLK 1 (2)	4,50
97	Burundi 1962 flowers issue, full set UM	1/7 + 3A	6,00
98	Burundi African animals 01.07.1962 issue, 50F 'Lions' in block of four, UM. Rare	25	8,00
99	Congo Republic 28.12.1966 issue. President Kennedy miniature sheets, full set UM. COB value 100 €	BL17/20	20,00
100	Congo democratic republic 2002 'Lions' issue COB 2094/8, imperforated full set UM, sheet corners	2094/8	8,50
<b>Congo Free State and Belgian Congo stamps</b>			
101	1894 issue 10c blue UM	18	3,00
102	1894 issue 10c carmine UM	19	3,00
103	1894 issue 50c olive, block of four, (upper left) sheet corner, UM	25	16,00
104	1930 issue, full set, LH or UM	150/8	15,00
<b>Ruanda Urundi</b>			
105	1918 issue, full set, UM. Some sheet margins and sheet corner; 25c: one missing perf	36/44	75,00
106	1930 issue full set UM	81/9	35,00
107	1944 issue full set UM	150/3	3,50
108	1955 issue full set UM	196/9	5,00
109	1959-1960-1961 issues, full sets, UM	205/30	3,00
<b>Congo Free State and Belgian Congo stamps</b>			
110	1889 issue 5F violet surcharge "Colis postaux 3,50 Fr" Regummed. With certificate BCSC. Bargain !	CP4	180,00
111	1889 issue 5F violet surcharge "Colis postaux 3,50 Fr" Cancellation Boma 20 AOUT	CP4	85,00



	1891. Repaired right upper corner. With certificate BCSC. Bargain !		
112	1942 issue 50F blue, block of six + 100F carmine, block of four, both sheet corner, UM	247/8	32,00
113	1947 issue 20F UM, block of 8, sheet corner	293	7,25
114	Incoming mail : Airmail cover from South Africa (1942) to Sakania. South African censor tape. Elisabethville transit cachet on reverse		6,50
115	Incoming mail: Airmail from Maseru, Basutoland, to Elisabethville (1950). "New air service inaugural flight Ladysmith to Maseru, Basutoland June 1950"		4,00
116	1922 issue 10c/5c green (50), full reconstructed plate V1 + F, LH or used	96	4,50
117	1922 issue 25c/40c carmine-brown (50), scarlet surcharge, full reconstructed plate II + A3, LH or used	97	5,00
118	1922 issue 25c/40c carmine-brown (50), carmine surcharge, full reconstructed plate II + A3, LH or used	97a	12,00
118	1922 issue 30c/10c carmine (50), full reconstructed plate V2 + B3, LH or used	98	3,00
120	1922 issue 30c/10c carmine retouched sky (50), full reconstructed plate V2 + C, LH or used	98a	4,00
121	1922 issue 30c/10c carmine (49, # 35 missing), reconstructed plate V1/2 + B2, LH or used	98	2,50
122	1922 issue 50c/25c blue (50), full reconstructed plate III2/3 + D, LH or used	99	4,00
123	1894 issue 50c olive (50) full sheet, UM	25	150,00
<b>Ruanda Urundi and Cancellations</b>			
124	1916 issue full set with KITEGA special cancellation, on pieces (CTO?)	28/35	15,00
125	1919 postage due stamps issue, 5c, 10c, 25c, 40c with taxes surcharge and KAREMA cancellations, on pieces (CTO ?)	TX1/2, TX4/5	24,00
126	1919 issue 5c green + 40c carmine-brown with BPCVPK N°10 & N°4 cancellations, on pieces (CTO?)	28 + 32	2,50
127	1919 postage due stamps issue, nearly full set (40c missing) with taxes surcharge and BPCVPK N°10 cancellations, on pieces (CTO ?)	TX1/4, 6/8	30,00
128	1919 postage due stamps issue, full set with taxes surcharge and KIGOMA cancellations, on pieces (CTO?)	TX1/8	40,00
129	1919 postage due stamps issue, full set with taxes surcharge and KIGOMA cancellations, on pieces (CTO?)	TX1/8	40,00
130	1919 postage due stamps issue, full set with taxes surcharge and KIGOMA cancellations, on pieces except for the 15c (CTO?)	TX1/8	38,00
131	1916 issue full set with KIGOMA cancellation, on pieces (CTO?)	28/35	10,00
132	1919 postage due stamps issue, 5c (3, included 1 on piece), 10c, 25c, 5F with taxes surcharge and KIGOMA cancellations (CTO?)	TX1/2, TX4, TX8	3,75

133	1916 issue 5c, 10c, 15c (2), 25c (2), 40c, 50c (2), 1F (2) all KIGOMA cancellations + 10c carmine TABORA cancellation, all on pieces (CTO?)	28/34	8,00
134	1922 issue 50c/25c blue variety "large T" in occupation, LH	49V1	2,00
135	1941 issue 10c grey, inverted surcharge, LH	121-Cu	12,00
136	1922 issue 5c/50c red-brown, UM, inverted value surcharge	45-Cu	30,00
<b>Belgian Congo, Congo Republic, Katanga, Albertville</b>			
137	Katanga 22.09.1960 Flowers with surcharge issue 10c inverted surcharge UM	23V	5,00
138	Congo Republic 30.06.1960 issue African Animals 6,50F black surcharge + 3,50/3F displaced surcharge, UM	409A	0,50
139	Albertville 15.12.1961 local issue, 10c "flowers" with Congo overprint on Katanga overprint + certificate Van Bierbeek	20	15,00
<b>Belgian Congo stamps</b>			
140	1909 issue local overprint L1 5c green, 10c carmine, 15c ochre, 40c blue-green, 50c olive, 1F carmine, all L1 and LH or HL	30L/32L, 34L/36L	32,00
141	1909 issue local overprint L1 5F carmine LH, adherences	38L	18,00
142	1909 issue local overprint L2 25c blue type 1 (some missing perfs) and type 2, both L2, LH	33L2 + 33aL2	4,00
143	1909 issue local overprint L1 5c green, inverted overprint LH	30L4	5,00
144	1909 issue local overprint. L1 to L7 series: 5c L1, 15c L2, 1F L3 (some short perfs), 15c L4, 5c L5, 50c L6, 1F L7 (some short perfs). All LH except 1F L3	30L (2), 32L (2), 35L, 36L(2)	35,00
145	1909 issue Brussels overprint B2, 5c green LH	30B2	15,00
146	1909 issue Brussels overprint B2, 10c carmine LH	31B2	15,00
147	1909 issue Brussels overprint B2, 15c ochre LH	32B2	14,00
148	1909 issue Brussels overprint B4, 25c blue LH	33B4	15,00
149	1909 issue Brussels overprint B2, 40c blue-green LH	34B2	15,00
150	1909 issue Brussels overprint, 50c olive LH	35B2	15,00
151	1909 issue Brussels overprint B2, 1F carmine LH	36B2	15,00
152	1909 issue typo overprint, full set + both types of the 25c blue, LH, very good condition	40/49 + 43a	95,00
153	1909 issue typo overprint, full set + both types of the 25c blue, used, a few missing perfs on 1F carmine, nice telegraphic cancellations on 50c & 5F	40/49 + 43a	39,00